



Target MLT

Class-2

TOP



MLT MCQS

- **RRB - LA / LS**
- **AIIMS - JLT/SLT**
- **PGIMER Chandigarh**
- **MHSRB Telangana**





Target MLT

Spreading of disease Worldwide called as?

- A) Epidemic ✓
- B) Endemic ✓
- C) Pandemic ✓
- D) Infection ✓



Target MLT

What's the difference between an endemic, epidemic and pandemic disease?



ENDEMIC DISEASE

is constantly present in a certain population or region, with relatively low spread (or there may be periods when it doesn't affect people at all, if it is only present in the environment).



EPIDEMIC DISEASE

is when there is a sudden increase in cases spreading through a large population like a country (an outbreak is similar, but usually covers a smaller geographic area).



PANDEMIC DISEASE

is when there is a sudden increase in cases spreading through several countries, continents, or the whole world.



Target MLT

Osmotic

Plasma Osmolality

↑ ↑

ADH -??

~~ADH -??~~

Diuresis
↓
Loss of water
through
urine

Sodium is responsible for the maintenance of-

- A. Blood coagulation
- ~~B.~~ Osmotic pressure of body fluids
- C. Cardiac muscle contractions
- D. Salt intake

Extracellular
Fluid
Volume

Os ⇒ ↑ ↑

ADH

Anti-Diuretic
Hormone

Reabsorption of water

Urine output (↓)



Kirby
paur



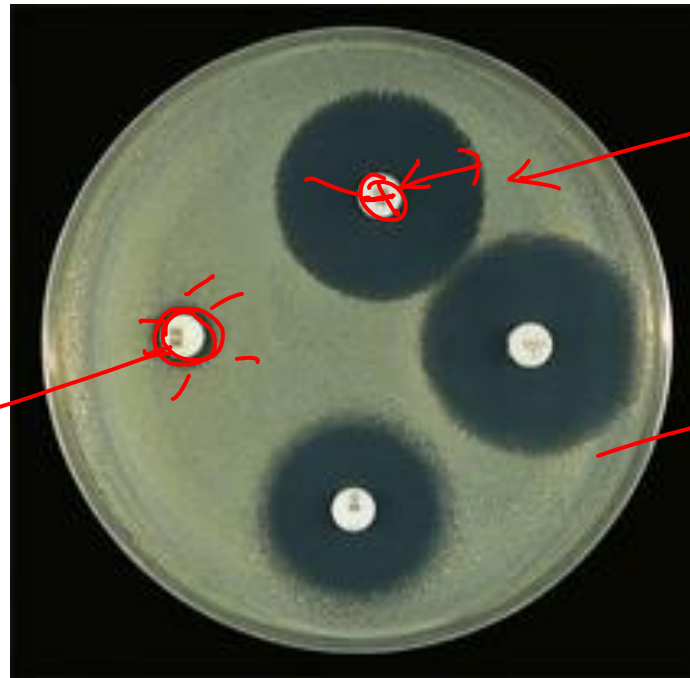
Target MLT

AST → Antimicrobial Sensitivity Test

Imp.

The diameter of antimicrobial disc must be is : →

- A) 2 mm
- B) 4 mm
- C) 6 mm
- D) 8 mm



sensitive

Resistant

Muller
Hinton
Agar

Telangan

40-45



Target MLT

Cooking

Pressure Cooker

Autoclave is an example of which of the following method of sterilization?

- A) Moist heat method**
- B) Dry heat method**
- C) Filtration method**
- D) Radiation method**

Temperature
Pressure

Steam



Target MLT

Red Hot

The tool for transferring and streaking cultures is:

- ~~A) Inoculating loop~~
- ✓ B) Vortex mixer
- ✓ C) Incubator
- ✓ D) Micrometer

Nichrome loop

??

which method of sterilization is used
Inoculating loop :- Dry Heat
↓
Flaming

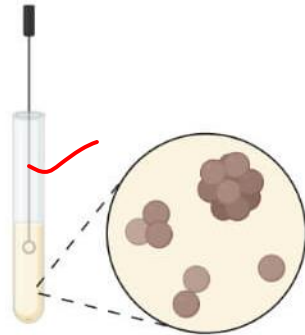
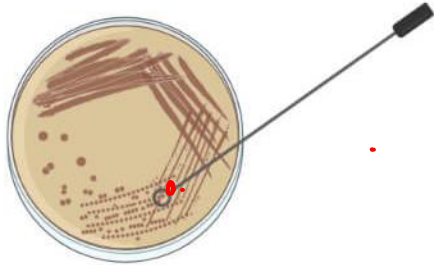


Target MLT

Inoculating
loop



wide



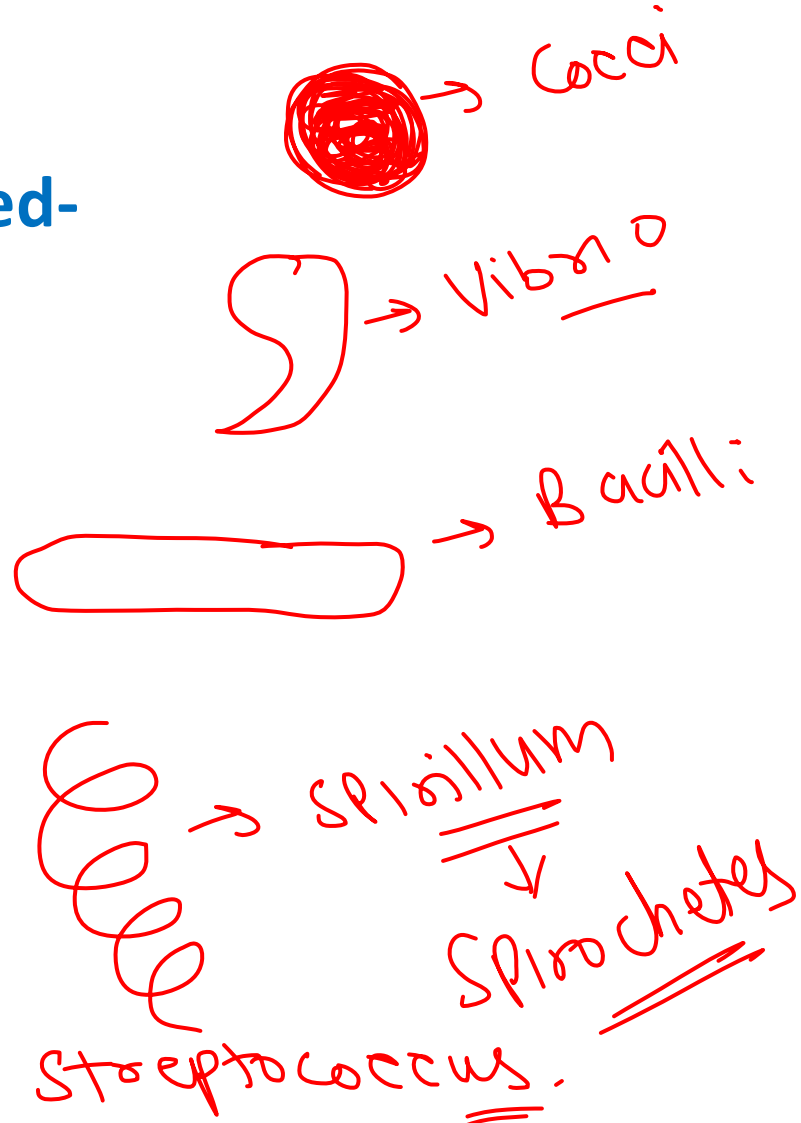
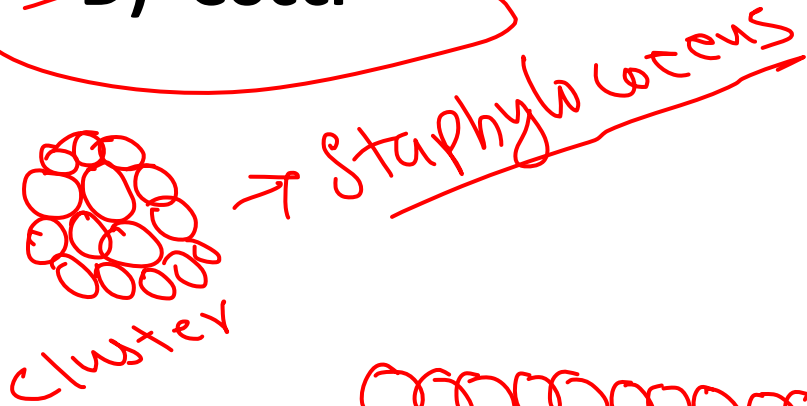
→ flaming



Target MLT

Round shape bacteria is called-

- A) Bacilli
- B) Vibrio
- C) Actinomycetes
- D) Cocci**





Target MLT

Ziehl – Nelson stain is used for-

- ~~A) Streptococcus~~
- B) Mycobacterium**
- ~~C) H1 Influenza~~
- ~~D) Bacillus~~

ZN

Acid Fastness of
Mycobacteria is
due to
Mycolic Acid



Target MLT

Telegram gp

Most agar and fluid media are sterilized by-

A) Steaming at 100 X

B) Autoclaving → 121°C

C) Filtration

D) Flaming

Heat labile
or
Vaccine

MMSRB
↓
10/11/24



Target MLT

Permanent



✓ ✓
Solidifying agent used for preparation of solid culture media is-

✓ A) DPX → mounting media

✓ B) Meat Extract

✓ C) Agar → most commonly used solidifying agent

✓ D) Peptone

Seaweeds

↓
Red Algae

⇒ No Nutritional Value



Target MLT

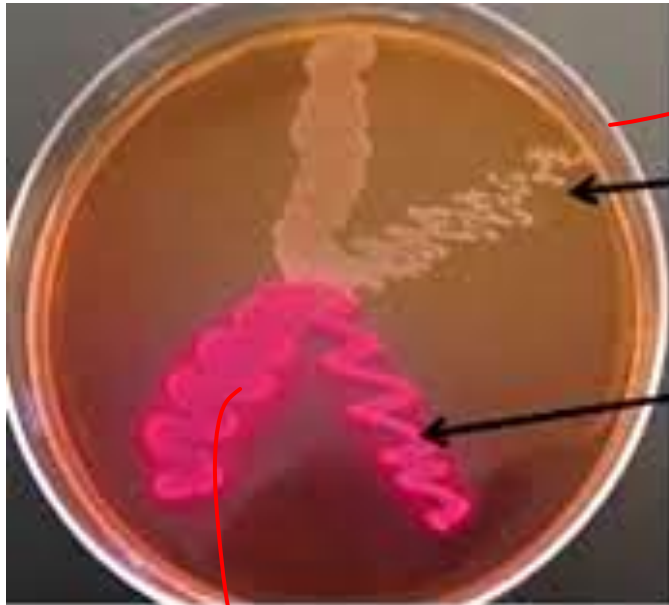
✓ ✓ ✓
Colony color of lactose fermenting bacteria on MacConkey agar-

- A) Colorless ✓
- B) Pink** ✓
- C) Green ✓
- D) Black ✓

Imp. ✓
Escherichia coli, Enterobacteria, Klebsiella.
⊗ ⊗



Target MLT



Yellow

Non-lactose fermenter
Pseudomonas
salmonella

Lactose fermenter
E. Coli
Klebsiella

Enterobacter

Pink



Target MLT

Typhoid ⇒ Salmonell typhi

Widal test is done for the diagnosis of which bacteria?

- A) Shigella
- B) E-coli
- C) Salmonella
- D) Proteus

Enteric fever
'H' Ag ⇒ Flagella
'O' Ag = Somatic Ag
Cell wall

Typhoid fever (Widal test):

Tube agglutination *

Detects Ab against both H (flagellar) and O (somatic) Ag

T 'o' Ag -



Target MLT

Flaming (dry heat) is used for the sterilization of-

- ~~A) Inoculating loop~~
- ~~B) Searing spatulas~~
- ~~C) Forceps~~
- D) All of the above



Target MLT

Chikungunya

Yellow fever

Aedes aegypti

Dengue is caused by?

Dengue is spreaded by:-

- ~~A) Fungus~~
- ~~B) Bacteria~~
- C) Virus
- ~~D) Protozoa~~

?
Aedes

Which Antigen is used for diagnosis of Dengue:-

NS₁ Ag

Non Structural Protein



Target MLT

What is the color of gram positive bacteria in gram stain?

A) Pink

B) Purple

C) Green

D) None



Target MLT

Violet
or
purple

Gram stain: Differentiates bacteria into Gram-positive (appear violet) and Gram-negative (appear pink) groups

- Primary stain by crystal violet (or gentian violet or methyl violet) for one minute.
- Mordant by Gram's iodine for one minute.
- Decolorization by acetone (for 1-2 sec) or ethanol (20-30 sec) with immediate wash. Decolorizer removes the primary stain from Gram-negative bacteria while the Gram-positive bacteria retain the primary stain.
- Counter stain or Secondary stains by safranin or diluted carbol fuchsin; is added for 30 sec.



Target MLT

The interval between exposure to infection and the appearance of the first symptoms is known as?

- ~~A) Latent period~~
- B) Incubation period**
- ~~C) Sensitivity period~~
- ~~D) None of the above~~

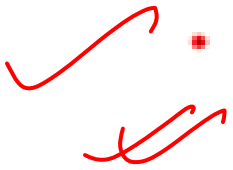


Target MLT

Incubation and Latent periods



Incubation period: time from exposure to development of disease. In other words, the time interval between invasion by an infectious agent and the appearance of the first sign or symptom of the disease in question.



• **Latent period:** the period between exposure and the onset of infectiousness (this may be shorter or longer than the incubation period).